

MODEL DC10-27B

- Digital-Readout
- Low-cost Item
- RoHS Compliant



Model DC10-27B



Model DC10-27BK



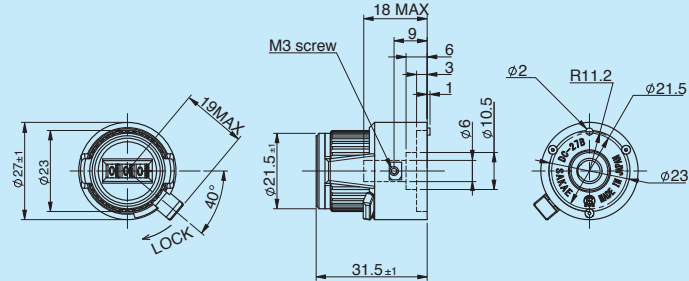
Model DC10-27BF



Model DC10-27BFK

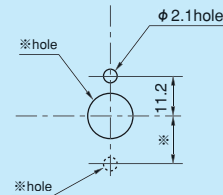
Standard Dimensions

Model DC10-27B · DC10-27BK



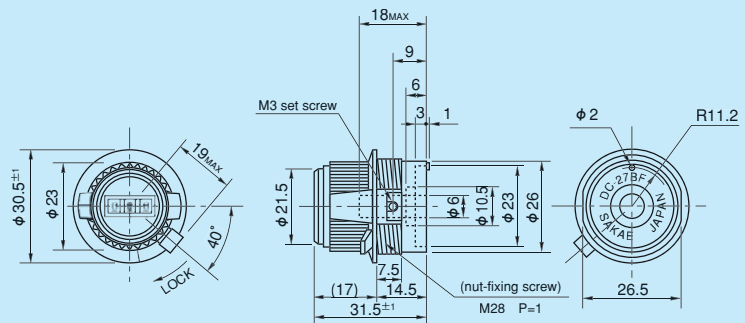
Note: One additional nut is attached as standard accessory.

Panel Arrangements



Note: The diameter of * hole is depending on the diameter of potentiometer to be mounted.

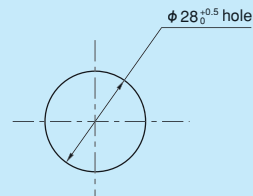
Model DC10-27BF · DC10-27BFK



Note: Fixing nut, washer, fixing plate or spacer, and hexagonal wrench are attached.

In the case you don't specify any potentiometers to be combined with, fixing plate would be attached.

Panel Arrangements



General Specifications

Model No	Number of Turns-Counting	Max. Indication (Min. readout)	Matching Shaft Dia. (mm)		Combinable Helicalohm Pot. (Matching shaft length: 18.5 ~ 20.6mm) n = Number of turns	Mounting Method (See Page 54)	Operating Temperature Range	Lock Device	Mass (Approx. g)
			Standard	Special					
DC10-27B DC10-27BK	10	999 (1/5000)	6	3 3.175 4 6.35	22HPM-n, 22HPM-nN, 25HP-nD, 22HHPM-n, 22HHPM-n	1	-30°C ~ +60°C	Yes	30
DC10-27BF DC10-27BFK	10	999 (1/5000)	6	3 3.175 4 6.35	22HPM-n, 22HPM-nN, 22HHPM-n	2	-30°C ~ +60°C	Yes	30
					25HP-nD, 22HHPM-n	3			

Note: 1. If you intend to mount the other potentiometer, please make the shaft length 20mm.
2. Matching Shaft dia. $\phi 6.35$, $\phi 4$, $\phi 3.175$, and $\phi 3$ are also available.

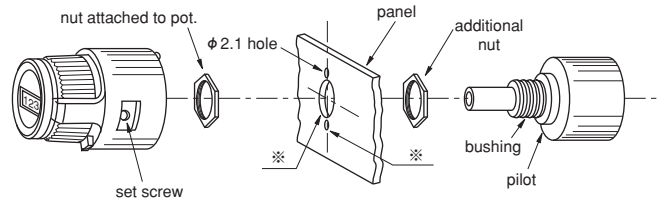
MODEL DC10-27B

HOW TO MOUNT DC SERIES

DC series dials are mounted as per the following sketches (Mounting Method 1-3): Firstly, the shaft of potentiometer is turned anti-clockwise to its limit and after the graduation of DC dial is adjusted to "000", the shaft of potentiometer is secured by the set screw positioned at the knob of the dial with the attached hexagonal wrench. With this, the mounting is completed.

Mounting Method 1.

DC10-27B
DC10-27BK



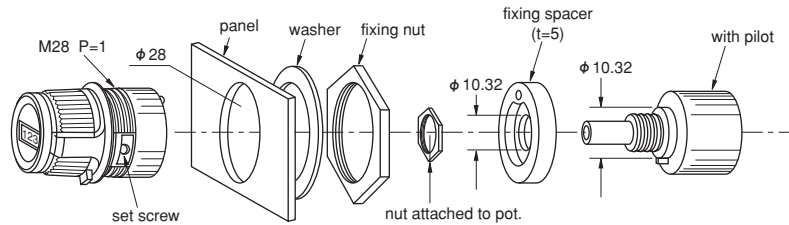
(Note 1) — The diameter of ※ hole is depending on the diameter of potentiometer to be mounted.

(Note 2) — For our models 22HPM-n, 22HPM-nN, 22H (H) PM-n (E), and 22HHPM-n, Please use at least less than 3mm thick panel. In this case, please note the hole diameter for combining potentiometer means a bushing diameter, not pilot diameter. For panel thickness of below 1.6mm, please use an additional nut.

Mounting Method 2.

DC10-27BF
DC10-27BFK

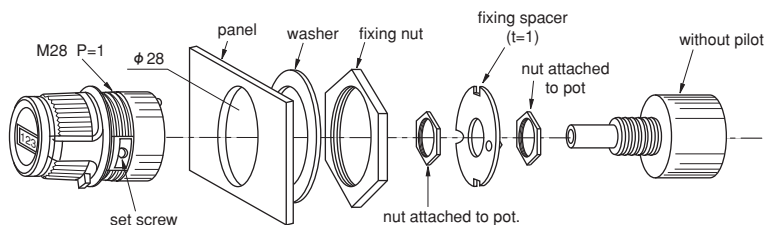
(In the case of 22HPM-n,
22HPM-nN,
22HHPM-n)



Mounting Method 3.

DC10-27BF
DC10-27BFK

(In the case of 25HP-nD
and other pots. (with
20mm long shaft))



(Note 3) — Dials and pots. are supplied separately.

(Note 4) — For models DC10-27BF and DC10-27BFK, we can supply potentiometer and dial combined at our side on request.