

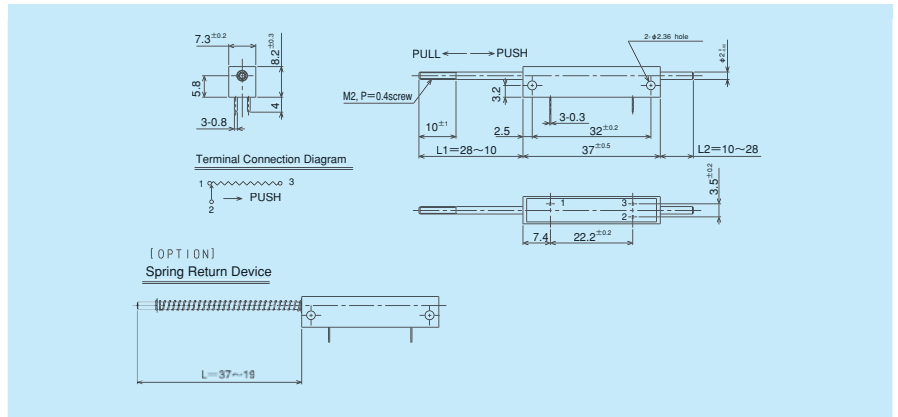
MODEL 8FLP15A

- Conductive Plastic
- With front and rear extended shaft
- Low-cost Item
- RoHS Compliant

● Standard Dimensions



Model 8FLP15A



● General Specifications

| | |
|--|---|
| Standard Resistance Values | 1k, 2k, 5k, 10k, 20k (Ω) |
| Total Resistance Tolerance | Standard Class ±15% (L) Precision Class ±10% (K) |
| Independent Linearity Tolerance | Standard Class ±2.0% Precision Class ±1.0% |
| Resolution | Essentially infinite |
| Output Smoothness | Within 0.1% against input voltage |
| Contact Resistance Variation | Within 2% C.R.V. |

| | |
|--|---------------------------|
| Power Rating | 0.3W |
| Electrical Stroke | 15±0.5mm |
| Mechanical Stroke | About 18mm |
| Insulation Resistance | Over 1,000MΩ at 500V.D.C. |
| Dielectric Strength | 1 minute at 500V.A.C. |
| Friction | Within 0.5N (50gf) |
| Stopper Strength | Approx. 10N (1kgf) |
| Resistance TemperatureCoefficient | ±400p.p.m./°C |
| Mass | Approx. 5g |

● Special Specifications Available

(In the case of the potentiometer with special specifications, the general specifications and environmental specifications may change. Please consult us in advance.)

- With spring return device mounted on the outer shaft (Friction is approx. 4N [400gf].)
- Special machining on the shaft
- With lead wire terminals