

MODEL 25HP

● Wirewound ● Bushingmount ● Servomount ● RoHS Compliant



Model 25HP-10B

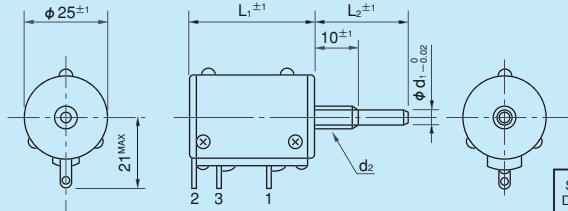
Standard Model Numbers

Bushingmount type	
5-turn models	25HP-5(B ~ E)
10-turn models	25HP-10(B ~ E)
Servomount type	
5-turn models	25HPS-5
10-turn models	25HPS-10

Note: Our standard shaft designation is B, unless otherwise specified.

Standard Dimensions

Bushingmount type

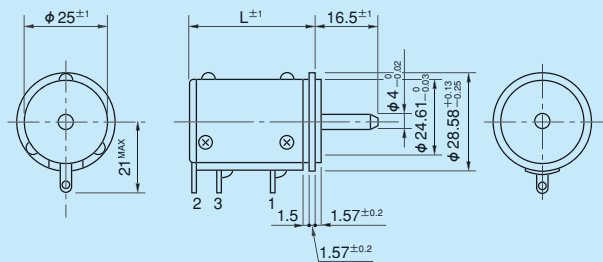


Model No.	L1
25HP-5	29
25HP-10	37.5

Note: 1. Unless otherwise specified, our standard shaft is B.
2. 1 pc. of inner teeth washer & 2 pcs. of hex nuts are attached.

Shaft Designation	Shaft Dimensions		Mounting Screw
	d1	L2	
B	φ 4	25	M7 P=0.75
C	φ 6	28	M9 P=0.75
D	φ 6	18.5	M9 P=0.75
E	φ 6	25	M9 P=0.75

Servomount type



Model No.	L
25HPS-5	30.5
25HPS-10	39

General Specifications

Standard Resistance Range	100,200,500,1k,2k,5k,10k,20k,50k Ω (5-turn)	
	100,200,500,1k,2k,5k,10k,20k,50k,100k Ω (10-turn)	
Max. Practical Resistance Value	100k Ω (5-turn)	
	200k Ω (10-turn)	
Total Resistance Tolerance	Standard Class ±3% (H)	
	Precision Class ±1% (F)	
Independent Linearity Tolerance	5-turn	10-turn
	Standard Class	±0.3% ±0.2%
	Precision Class	±0.2% ±0.1%
	(Within 5kΩ)	(±0.25%) (±0.15%)
Power Rating	1.5W (5-turn)	
	2.0W (10-turn)	
Noise	Within 100Ω E.N.R.	
Electrical Travel	360° × n ± 5° (n: No. of turns)	

Mechanical Travel	360° × n + 10° / 0° (n: No. of turns)
Insulation Resistance	Over 100MΩ at 1,000V.D.C.
Dielectric Strength	1 minute at 1,000V.A.C.
Starting Torque	Within 8mN · m (80gf · cm)
	(Bushingmount type)
	Within 5mN · m (50gf · cm)
	(Servomount type)
Stopper Strength	Approx. 0.9N · m (9kgf · cm)
Resistance Temperature Coefficient	±20p.p.m./°C
Mass	Approx. 50g (5-turn)
	Approx. 60g (10-turn)

Standard Resistance Values ■ No. of Wire Turns ■ Resistance Wire Used

Resist. Value (Ω)	100	200	500	1k	2k	5k	10k	20k	50k	100k	200k
25HP-5	1,300	1,700	2,000	2,400	2,500	3,200	4,000	5,000	7,000	※ 8,800	—
25HP-10	2,000	2,600	3,100	4,000	4,800	5,000	6,500	8,000	10,000	14,000	※18,000
Resist. Wire Used	Cu-Ni					Ni-Cr					

Note: Mark ※ shows special high resistance value.

Special Specifications Available

(In the case of the potentiometer with special specifications, the general specifications and environmental specifications may change. Please consult us in advance.)

- Lower resistance (10Ω, 20Ω, 50Ω)
- 3-turn type (S25HP-3)
- 15-turn type (S25HP-15), 20-turn type (S25HP-20)
- Extra taps (Available up to 5 taps)
- Multi-ganged (Available up to 2 gangs)
- Shaft with front and rear extension (Rear shaft with 3mm dia. and 10mm length)
- Shaft dia. (φ 3.175mm, φ 6.35mm) & bushing with inch dimension
- Special machining on the shaft