

MODEL 20HP

● Wirewound ● Bushingmount ● Servomount ● RoHS Compliant



Model 20HP-10S

Standard Model Numbers

Bushingmount type	
5-turn models	20HP-5S
10-turn models	20HP-10S
Servomount type	
5-turn models	20HPS-5S
10-turn models	20HPS-10S

General Specifications

Standard Resistance Range	100,200,500,1k,2k,5k,10k,20k Ω (5-turn) 100,200,500,1k,2k,5k,10k,20k,50k Ω (10-turn)												
Max. Practical Resistance Value	50k Ω (5-turn) 100k Ω (10-turn)												
Total Resistance Tolerance	Standard Class ±3% (H) Precision Class ±1% (F)												
Independent Linearity Tolerance	<table border="1"> <thead> <tr> <th></th> <th>5-turn</th> <th>10-turn</th> </tr> </thead> <tbody> <tr> <td>Standard Class</td> <td>±0.3%</td> <td>±0.2%</td> </tr> <tr> <td>Precision Class</td> <td>±0.2%</td> <td>±0.1%</td> </tr> <tr> <td>(Within 5kΩ)</td> <td>(±0.25%)</td> <td>(±0.15%)</td> </tr> </tbody> </table>		5-turn	10-turn	Standard Class	±0.3%	±0.2%	Precision Class	±0.2%	±0.1%	(Within 5kΩ)	(±0.25%)	(±0.15%)
	5-turn	10-turn											
Standard Class	±0.3%	±0.2%											
Precision Class	±0.2%	±0.1%											
(Within 5kΩ)	(±0.25%)	(±0.15%)											
Power Rating	1.0W (5-turn) 2.0W (10-turn)												
Noise	Within 100Ω E.N.R.												
Electrical Travel	360° × n ± 5° (n: No. of turns)												

Mechanical Travel	360° × n $\begin{matrix} +10^\circ \\ 0^\circ \end{matrix}$ (n: No. of turns)
Insulation Resistance	Over 100MΩ at 1,000V.D.C.
Dielectric Strength	1 minute at 1,000V.A.C.
Starting Torque	Within 5mN · m (50gf · cm) (Bushingmount type) Within 3mN · m (30gf · cm) (Servomount type)
Stopper Strength	Approx. 0.9N · m (9kgf · cm) (Bushingmount type) Approx. 0.6N · m (6kgf · cm) (Servomount type)
Resistance Temperature Coefficient	±20p.p.m./°C
Mass	Approx. 20g (5-turn) Approx. 25g (10-turn)

Standard Resistance Values ■ No. of Wire Turns ■ Resistance Wire Used

Resist. Value (Ω)	100	200	500	1k	2k	5k	10k	20k	50k	100k
20HP-5S	1,100	1,500	2,000	2,500	2,400	3,200	3,900	4,800	5,500	※ 6,500
20HP-10S	1,800	2,200	3,200	4,000	5,000	5,000	6,400	7,800	10,000	※ 11,000
Resist. Wire Used	Cu-Ni					Ni-Cr				

Note: Mark※ shows special high resistance value.

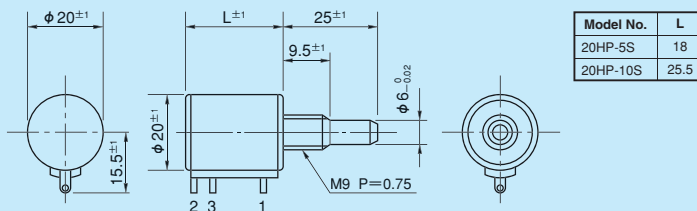
Special Specifications Available

(In the case of the potentiometer with special specifications, the general specifications and environmental specifications may change. Please consult us in advance.)

- 3-turn type (S20HP-3S) ● Lower resistance values (10Ω, 20Ω, 50Ω) ● Extra tap (Available up to 1 tap)
- Multi-ganged (Available up to 2 gangs) ● Shaft with front and rear extension (Rear shaft with 2mm dia. and 10mm length)
- Shaft dia. (φ 6.35mm) & bushing with inch dimension ● Special machining on the shaft
- Simple sealed housing (except servomount type) ● Slipping-clutch incorporated type (20mN · m ~ 60mN · m)
- With pin terminals for p.c. board (20HP-5P, 20HP-10P)

Standard Dimensions

■ Bushingmount type



Note: 1 pc. of inner teeth washer & 2 pcs. of hex nuts are attached.

■ Servomount type

