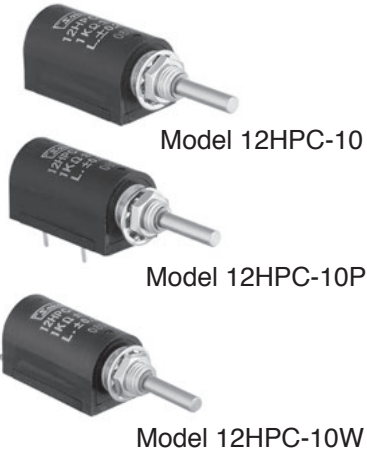


MODEL 12HPC

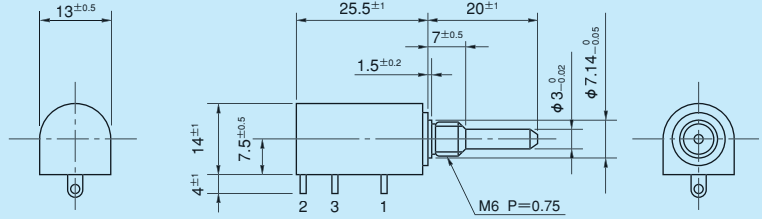
- Low-cost Item
- Wirewound
- Bushingmount
- RoHS Compliant

(With metric dimensions)

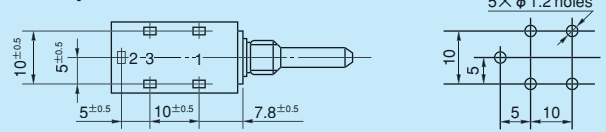


● Standard Dimensions

● With lug terminals

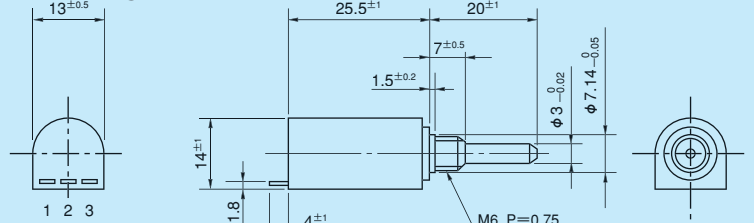


● With pin terminals for p.c. board



Terminal Holes Layout

● With rear lug terminals



- Note: 1. set of inner teeth washer & hex nut is attached.
 2. Outer dimension of 5-turn version is the same as those of 10-turn.
 3. Please process the mounting hole on the panel. The diameter should be $7.14\text{mm} + 0.05$.

● Standard Model Numbers

Bushingmount type	
With lug terminals	
5-turn models	12HPC-5
10-turn models	12HPC-10
With pin terminals for p.c. board	
5-turn models	12HPC-5P
10-turn models	12HPC-10P
With rear lug terminals	
5-turn models	12HPC-5W
10-turn models	12HPC-10W

● General Specifications

Standard Resistance Range	100,200,500,1k,2k,5k,10k,20k Ω (5-turn)	
	100,200,500,1k,2k,5k,10k,20k,50k Ω (10-turn)	
Max. Practical Resistance Value	50k Ω (5-turn)	
	100k Ω (10-turn)	
Total Resistance Tolerance	Standard Class ±3% (H)	
	Precision Class ±1% (F)	
Independent Linearity Tolerance	5-turn	
	10-turn	
	Standard Class	±0.35% ±0.25%
	Precision Class	±0.2% ±0.1%
Power Rating	0.75W (5-turn)	
	1.5W (10-turn)	
Noise	Within 100Ω E.N.R.	
Electrical Travel	360° × n ± 5° (n: No. of turns)	
Mechanical Travel	360° × n + 15° / 0° (n: No. of turns)	

Insulation Resistance	Over 1,000MΩ at 500V.D.C.
Dielectric Strength	1 minute at 1,000V.A.C.
Starting Torque	Within 3mN · m (30gf · cm)
Stopper Strength	Approx. 0.15N · m (1.5kgf · cm)
Appropriate fastening torque of the nut	Within 0.8N · m (8kgf · cm)
Resistance Temperature Coefficient	±20p.p.m./°C
Mass	Approx. 10g (Both 5-turn and 10-turn)

● Standard Resistance Values ■ No. of Wire Turns ■ Resistance Wire Used

Resist. Value (Ω)	100	200	500	1k	2k	5k	10k	20k	50k	100k
12HPC-5	920	1,190	1,250	1,510	1,790	2,380	3,120	3,800	5,430	—
12HPC-10	1,690	1,850	2,560	2,500	3,030	4,170	4,760	6,250	8,330	※10,870
Resist. Wire Used	Cu-Ni					Ni-Cr				

Note: Mark ※ shows special high resistance value.

● Special Specifications Available

(In the case of the potentiometer with special specifications, the general specifications and environmental specifications may change. Please consult us in advance.)

- 3-turn type (S12HPC-3)
- Shaft with front and rear extension (Rear shaft with 0.8mm dia. and 10mm length)
- Special machining on the shaft
- Simple sealed housing