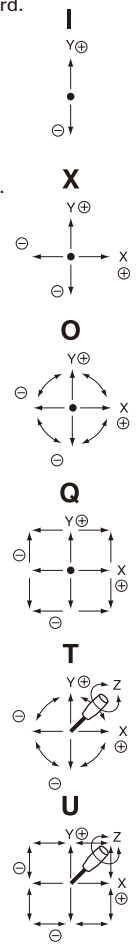
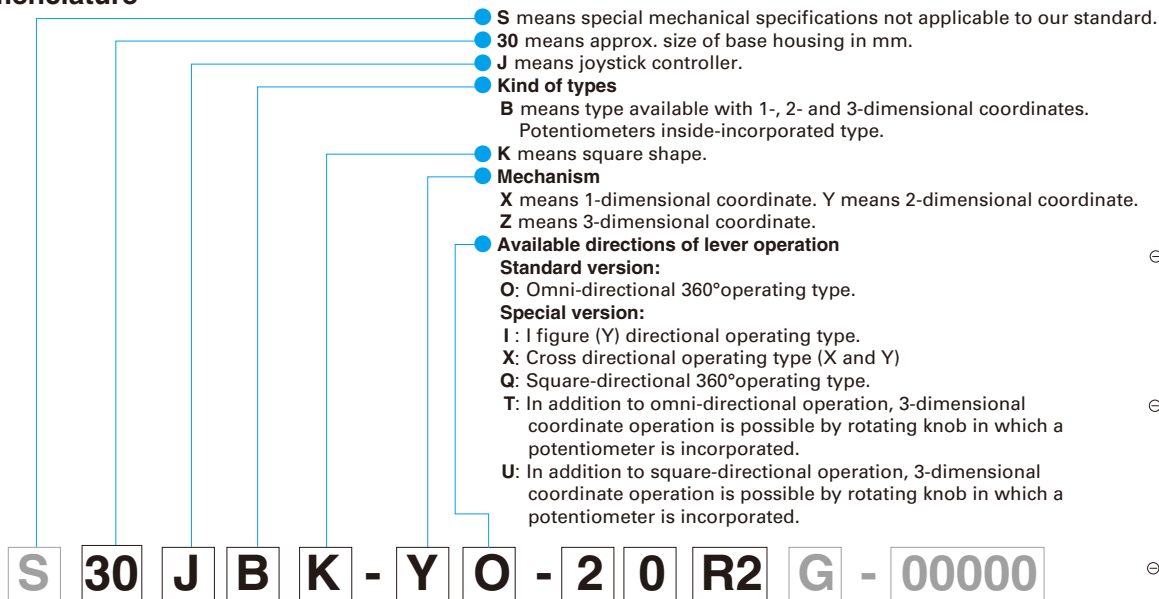


30JB

● Potentiometer incorporated type ● With conductive plastic element

● Nomenclature



Number of potentiometers to be incorporated only for 30JBK.
 0...no potentiometer incorporated. 1...1 potentiometer incorporated.
 2...2 potentiometers incorporated. 3...3 potentiometers incorporated.

Number of switches to be incorporated.
 0...no switch incorporated. 1...1 switch incorporated.
 2...2 switches incorporated.

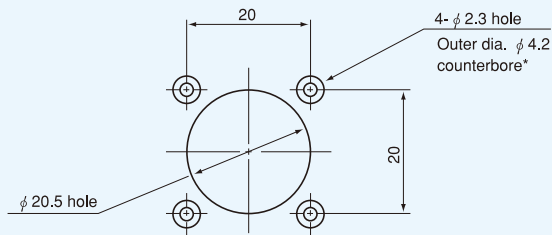
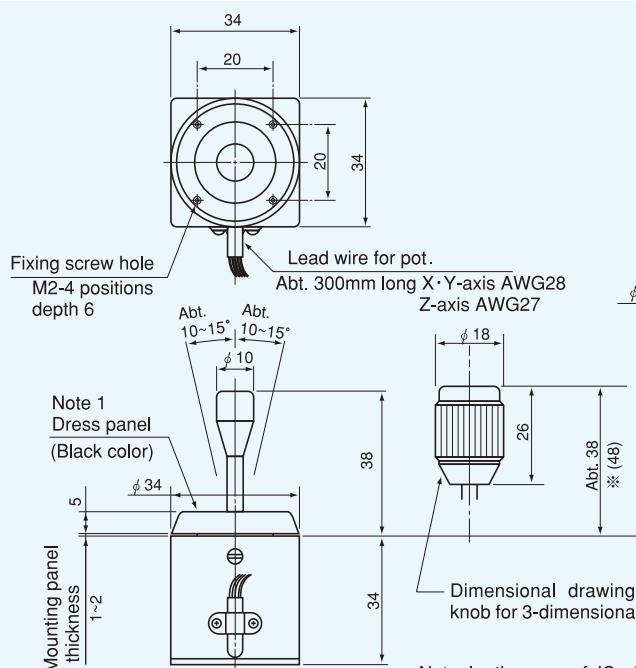
With spring return device : **R1:** with spring return device for 1-dimensional coordinate.
R2: with spring return device for 2-dimensional coordinate.
R3: with spring return device for 3-dimensional coordinate.

Mounting accessories : **G:** with dust proof rubber cover. **P:** with sub-panel for mounting.

Special part number:
 In the case we produce customized products, we add 4 or 5-digit branch number.

● Standard Dimensions

■ Panel Arrangements



Note: 1) In the case of JC with a dust-proof rubber cover, the counterbore-work (*part) is not necessary.
 2) 4 pcs. of mounting screw (M2 × 6) are attached.

Note: In the case of JC with a dust-proof rubber cover, the shape of dress panel shall be changed.
 ※Numeral in parentheses shows dimensions of Dust-proof rubber cover.

(Unit : mm)

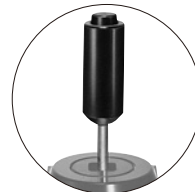


30JBK-YO-20R2
(Standard
2-dimensional coordinate type)



30JBK-ZT-30R3G
(3-dimensional coordinate type with
dust proof rubber cover)

Special Knobs Available
For detailed dimensions, please refer to page 52.



Knob 104



Knob 304

STANDARD SPECIFICATIONS

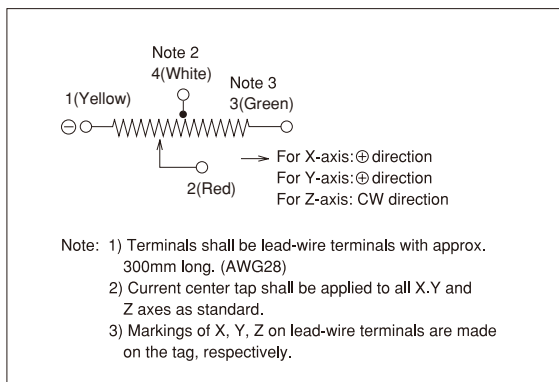
Mechanical Performance

Controlling range of operating lever	X and Y directions : Approx.±10°~±15° from center position.(Omni-directionally) Z direction : Approx.±30°~±35° from center position.
Operating force (Standard spring return device Automatically return to center) (Omni-directionally)	X and Y directions : Approx.0.8~2N (80~200gf) Z direction : Approx.15~60mN·m (150~600gf.cm)
Operating temperature range	-20°C~+65°C
Vibration	10~55Hz 98m/s ²
Shock	294m/s ²
Life expectancy	Approx. 5,000,000 operations
Mass	2-dimensional coordinate type : Approx. 80g 3-dimensional coordinate type : Approx. 100g

Electrical Performance

Potentiometers mounted	Special conductive plastic resistive element is exclusively used for 30JB series. (X and Y axes pots) Resistance value : 10kΩ±15% Rating : 0.1W Electrical rotating angle : Approx.20° Independent linearity tolerance : ±3% (Z axis pot.) Resistance value : 10kΩ±15% Rating : 0.04W Electrical rotating angle : Approx.60° Independent linearity tolerance : ±3%
Output smoothness	Below 0.2% against input voltage
Contact resistance variation	Below 6% C.R.V
Resolution	Essentially infinite
Dielectric strength	1 minute at 500V.A.C.
Insulation resistance	Over 1,000MΩ at 500V.D.C.

Terminal Connection Diagram



Special Specifications Available

Please see page 55, a table of "Special Specifications Available".