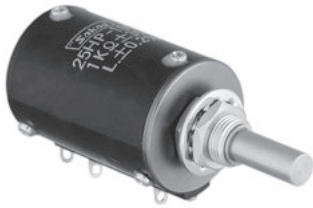


MODEL 25HP

● Wirewound ● Bushingmount ● Servomount ● RoHS Compliant



Model 25HP-10E

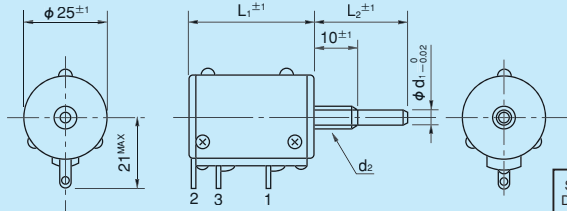
Standard Model Numbers

Bushingmount type	
5-turn models	25HP-5(B ~ E)
10-turn models	25HP-10(B ~ E)
Servomount type	
5-turn models	25HPS-5
10-turn models	25HPS-10

Note: Our standard shaft designation is E, unless otherwise specified.

Standard Dimensions

Bushingmount type

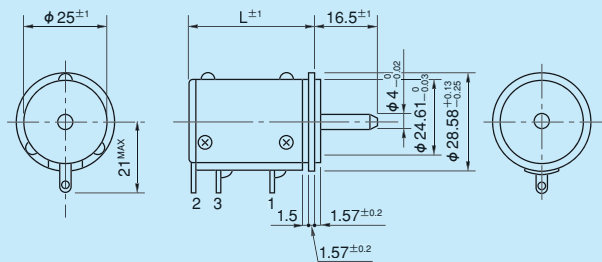


Model No.	L ₁
25HP-5	29
25HP-10	37.5

Note: 1. Unless otherwise specified, our standard shaft is B.
2. 1 pc. inner teeth washer and 2 pcs. hex nuts are attached.

Shaft Designation	Shaft Dimensions		Mounting Screw
	d1	L ₂	
B	φ 4	25	M7 P=0.75
C	φ 6	28	M9 P=0.75
D	φ 6	18.5	M9 P=0.75
E	φ 6	25	M9 P=0.75

Servomount type



Model No.	L
25HPS-5	30.5
25HPS-10	39

General Specifications

Standard Resistance Range	100Ω to 50kΩ (5-turn) 100Ω to 100kΩ (10-turn)
Max. Practical Resistance Value	100kΩ (5-turn) 200kΩ (10-turn)
Total Resistance Tolerance	Standard Class ±3% (H) Precision Class ±1% (F)
Independent Linearity Tolerance	5-turn 10-turn
	Standard Class ±0.3% ±0.2% Precision Class ±0.2% ±0.1% (Within 5kΩ) (±0.25%) (±0.15%)
Power Rating	1.5W (5-turn) 2.0W (10-turn)
Noise	Within 100Ω E.N.R.
Electrical Travel	360° × n ± 5° (n: No. of turns)

Mechanical Travel	360° × n + 10° ₀ (n: No. of turns)
Insulation Resistance	Over 100MΩ at 1,000V.D.C.
Dielectric Strength	1 minute at 1,000V.A.C.
Starting Torque	Within 8mN · m (80gf · cm) (Bushingmount type)
	Within 5mN · m (50gf · cm) (Servomount type)
Stopper Strength	Approx. 0.9N · m (9kgf · cm)
Resistance Temperature Coefficient	±20p.p.m./°C
Mass	Approx. 50g (5-turn)
	Approx. 60g (10-turn)

Standard Resistance Values ■ No. of Wire Turns ■ Resistance Wire Used

Resist. Value (Ω)	100	200	500	1k	2k	5k	10k	20k	50k	100k	200k
25HP-5	1,300	1,700	2,000	2,400	2,500	3,200	4,000	5,000	7,000	※ 8,800	—
25HP-10	2,000	2,600	3,100	4,000	4,800	5,000	6,500	8,000	10,000	14,000	※ 18,000
Resist. Wire Used	Cu-Ni System						Ni-Cr System				

Note: Mark ※ shows special high resistance value.

Special Specifications Available

(In case of the potentiometer with special specifications, the general specifications and environmental specifications may change. Please consult us in advance.)

- Lower resistance (10Ω, 20Ω, 50Ω) ● 3-turn type (S25HP-3) ● 15-turn type (S25HP-15), 20-turn type (S25HP-20)
- Extra taps (Available up to 5 taps) ● Multi-ganged (Available up to 2 gangs)
- Shaft with front and rear extension (Rear shaft with 3mm dia. and 10mm length)
- Shaft dia. (φ 3.175mm, φ 6.35mm) & bushing with inch dimension ● With a limit-switch adaptor ● Special machining on the shaft