

## Special Specifications Available

### Special Knob Shapes

**Type 101**  
Push-button knob  
( $\phi$  23 $\times$ 50L)



Fixable to type 40JB, 40JE, 50JA and 60JB (switch incorporated inside the knob)

**Type 102A**  
Push-button knob  
( $\phi$  30 $\times$ 68L)



Fixable to type 50JC, (switch incorporated inside the knob)

**Type 103**  
Push-button knob  
( $\phi$  16 $\times$ 30L)



Fixable to type 50JA, (switch mounted outside the housing)

**Type 104**  
Push-button knob  
( $\phi$  19 $\times$ 45L)



Fixable to type 30JB and 30JE (switch incorporated inside the knob)

**Type 201**  
Grip-knob ( $\phi$  32 $\times$ 55L)



Fixable type 50JA and 50JC

**Type 202**  
Grip-knob ( $\phi$  20 $\times$ 37L)



Fixable type 50JA and 60JB

**Type 203**  
Grip-knob ( $\phi$  30 $\times$ 69L)



Fixable type 50JC

(Note) There are 2 types of switches for push-button knob: Momentary type (standard) and Alternate type (special). "L" means length of knob in mm.

**Type 301**  
Rotary-knob ( $\phi$  23 $\times$ 55L)



Fixable to type 50JA and 60JB

**Type 302**  
Rotary-knob ( $\phi$  30 $\times$ 55L)



Fixable to type 50JA and 60JB

**Type 303**  
Rotary-knob ( $\phi$  16 $\times$ 30L)



Fixable to type 50JA-ZZ with spring return device

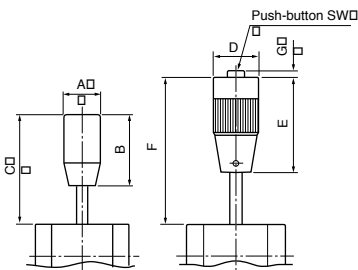
**Type 304**  
Rotary-knob ( $\phi$  18 $\times$ 26L)



Fixable to type 30JB and 30JE

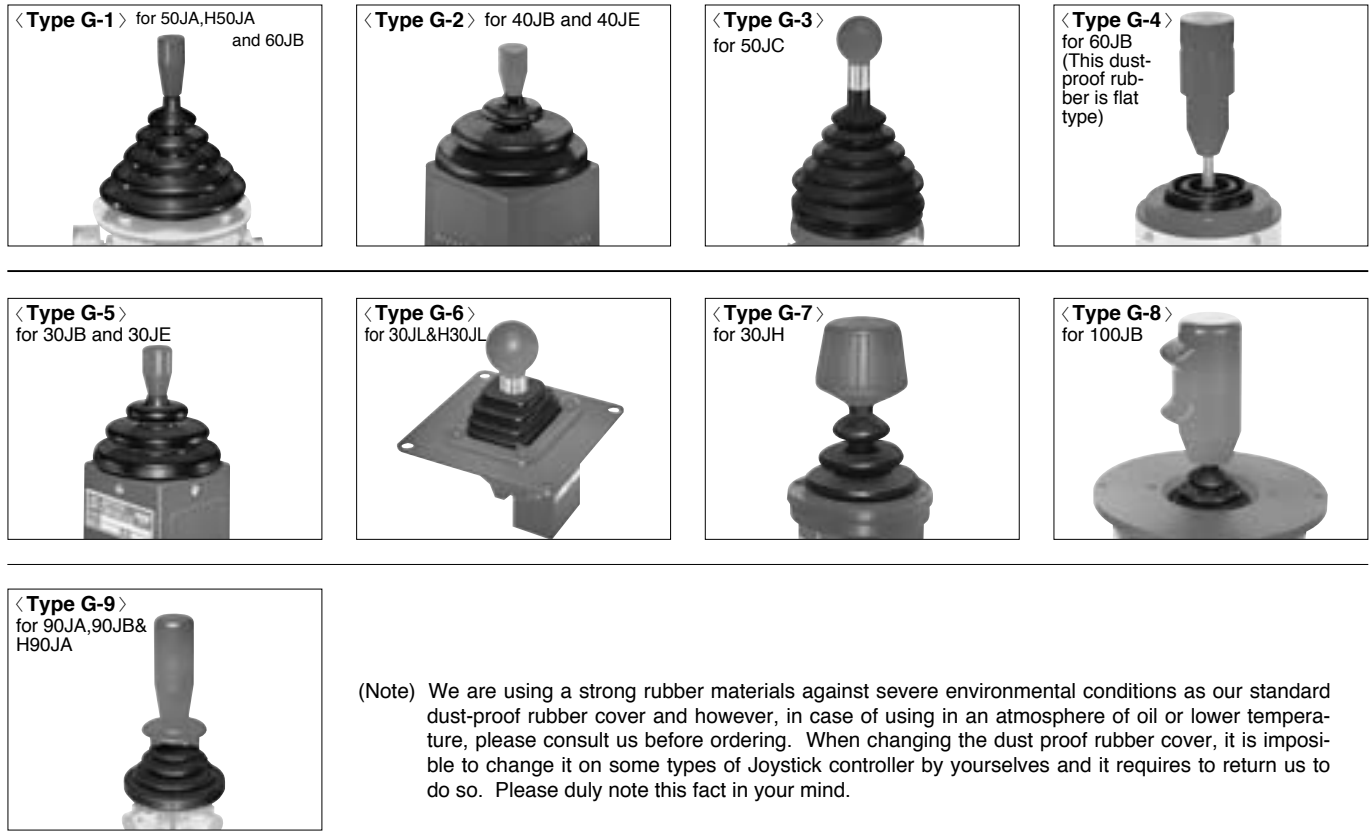
### Detailed Dimensions of Special Shape Knob

Special Shape Knob	Fixable Joystick Controllers' Series									
	Dimensions	30JB, JE		40JB, JE		50JA		50JC	60JB	
		Without rubber cover	With type G5 rubber cover	Without rubber cover	With type G2 rubber cover	With rubber cover	With type G1 rubber cover	With rubber cover	Without rubber cover	With type G1 rubber cover
Type (101)	D	—	—	$\phi$ 23	$\phi$ 23	$\phi$ 23	$\phi$ 23	—	$\phi$ 23	$\phi$ 23
	E	—	—	50	50	50	50	—	50	50
	F	—	—	Abt. 74	Abt. 74	Abt. 77	Abt. 102	—	Abt. 82	Abt. 101
	G	—	—	Abt. 3	Abt. 3	Abt. 3	Abt. 3	—	Abt. 3	Abt. 3
Type (102A) (with rubber cover)	D	—	—	—	—	—	—	$\phi$ 30	—	—
	E	—	—	—	—	—	—	68	—	—
	F	—	—	—	—	—	—	Abt. 127	—	—
	G	—	—	—	—	—	—	Abt. 1	—	—
Type (103)	D	—	—	—	—	$\phi$ 16	$\phi$ 16	—	—	—
	E	—	—	—	—	30	30	—	—	—
	F	—	—	—	—	Abt. 57	Abt. 83	—	—	—
	G	—	—	—	—	Abt. 3	Abt. 3	—	—	—
Type (104)	D	$\phi$ 19	$\phi$ 19	—	—	—	—	—	—	—
	E	45	45	—	—	—	—	—	—	—
	F	Abt. 57	Abt. 67	—	—	—	—	—	—	—
	G	Abt. 4	Abt. 4	—	—	—	—	—	—	—
Type (201)	A	—	—	—	—	$\phi$ 32	$\phi$ 32	$\phi$ 32	—	—
	B	—	—	—	—	55	55	55	—	—
	C	—	—	—	—	Abt. 82	Abt. 106	Abt. 132	—	—
Type (202)	A	—	—	—	—	$\phi$ 20	$\phi$ 20	—	$\phi$ 20	$\phi$ 20
	B	—	—	—	—	37	37	—	37	37
	C	—	—	—	—	Abt. 58	Abt. 82	—	Abt. 63	Abt. 81
Type (203)	A	—	—	—	—	—	—	$\phi$ 30	—	—
	B	—	—	—	—	—	—	69	—	—
	C	—	—	—	—	—	—	Abt. 126	—	—
Type (301)	A	—	—	—	—	$\phi$ 23	$\phi$ 23	—	$\phi$ 23	$\phi$ 23
	B	—	—	—	—	55	55	—	55	55
	C	—	—	—	—	Abt. 73	Abt. 107	—	Abt. 78	Abt. 106
Type (302)	A	—	—	—	—	$\phi$ 30	$\phi$ 30	—	$\phi$ 30	$\phi$ 30
	B	—	—	—	—	55	55	—	55	55
	C	—	—	—	—	Abt. 73	Abt. 107	—	Abt. 78	Abt. 106
Type (303)	A	—	—	—	—	$\phi$ 16	$\phi$ 16	—	—	—
	B	—	—	—	—	30	30	—	—	—
	C	—	—	—	—	Abt. 57	Abt. 83	—	—	—
Type (304)	A	$\phi$ 18	$\phi$ 18	—	—	—	—	—	—	—
	B	26	26	—	—	—	—	—	—	—
	C	Abt. 38	Abt. 48	—	—	—	—	—	—	—



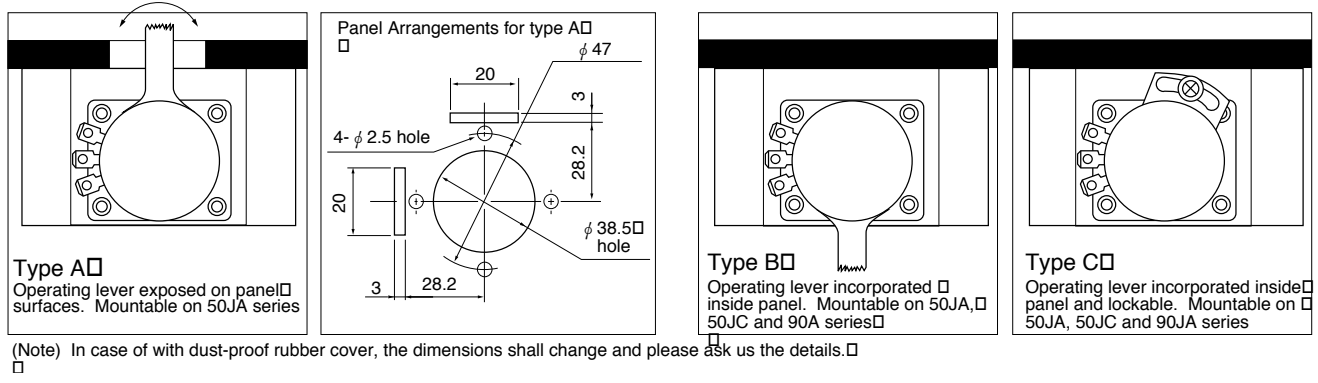
(Note) The height of above C and F shows the dimension when standard type of each model with YO, ZT and ZZ mounts such special knobs.

**Dust Proof Rubber** (Model 30JH, 50JC, 90JA, 90JB series have a dust proof rubber cover as standard version)



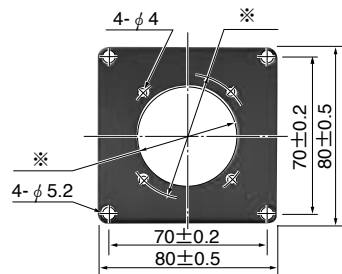
(Note) We are using a strong rubber materials against severe environmental conditions as our standard dust-proof rubber cover and however, in case of using in an atmosphere of oil or lower temperature, please consult us before ordering. When changing the dust proof rubber cover, it is impossible to change it on some types of Joystick controller by yourselves and it requires to return us to do so. Please duly note this fact in your mind.

**Potentiometer's "0" Position Adjusting Mechanism**



**Sub-panel for Mounting**

It is possible to supply each type of joystick controller with this sub-panel on request. (Thickness : 2mm)



Note : 1) The dimensions of mark "※" are determined by the joystick controllers to be mounted.  
 2) For mounting use of 90JA, L90JA, and 90JB, the outer dimension is 100 and inner dimension between 4-φ5.2 hole pitch is 90.