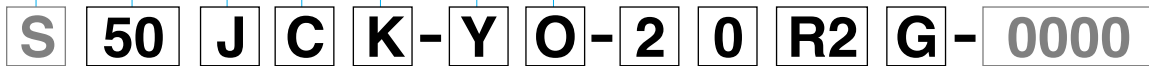
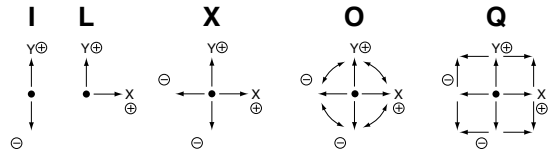


50JC

Potentiometer with a conductive plastic resistive element

Nomenclature

- S means special mechanical specifications not applicable to our standards.
- 50 means approx. size of base housing in mm.
- J means joystick controller.
- C means 1 and 2-dimensional coordinates is available and also means potentiometers outside-mounted type. Dust proof rubber cover and spring return device are available as standard version.
- K means square shape.
- Y means kind of mechanism:
X : 1-dimensional coordinate. Y: 2-dimensional coordinate.
- Available directions of lever operation
Standard version:
O : Omni-directional 360° operating type.
Special version:
I : I figure (Y) directional operating type.
L : L figure(+Y, +X only) directional operating type.
X : Cross directional of X and Y operating type.
Q : Square-directional 360° operating angle.
S : Special operating directions other than the above-mentioned types.



Number of potentiometers to be mounted. ●
0...no potentiometer mounted. 2...2 potentiometers mounted.
1...1 potentiometer mounted. 3...3 potentiometers mounted.

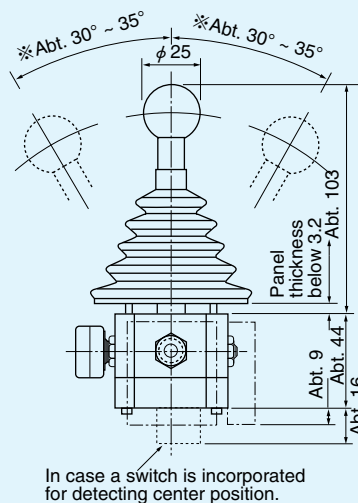
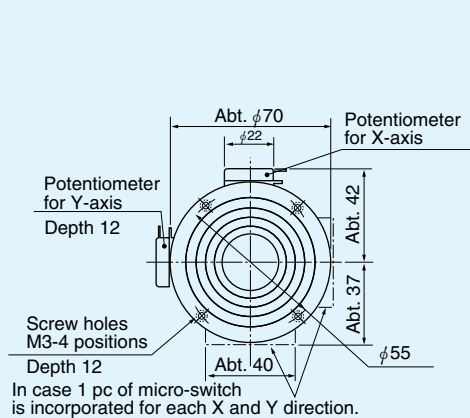
Number of switches to be mounted. ●
0...no switch mounted. 4...4 switches mounted.
1...1 switch mounted. 5...5 switches mounted.
2...2 switches mounted. 6...6 and over 6 switches mounted.
3...3 switches mounted. 9...other switches to your special request.

With spring return device : (50JC standard) ●
R1: with spring return device for 1-dimensional coordinate.
R2: with spring return device for 2-dimensional coordinate.

Mounting accessories : G: with dust proof rubber cover.(50JC standard) P: with sub-panel for mounting. ●

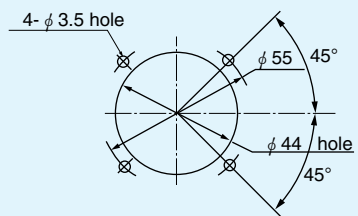
Special part number : ●
In case we produce customized product, we add 4-digit branch number.

Standard Dimensions



Panel Arrangements

(In case of 1 and 2-dimensional coordinates)



(Unit : mm)



50JCK-YO-20R2G
(Standard)
(2-dimensional coordinate type)



S50JCK-YO-25R2G
(With 5 micro-switches and 1 of them is for detecting the center position)

STANDARD SPECIFICATIONS

●Mechanical Performance

Controlling range of operating lever :

- 2-dimensional coordinate type : Omni-directionally approx. $\pm 30^\circ \sim \pm 35^\circ$ operation from center position.

Operating force : Standard spring return device : Automatically return to center (omni-directional type)

Approx. 3~15N (300~ 1,500gf.)

Operating temperature range : $-20^\circ\text{C} \sim +65^\circ\text{C}$

Vibration : 10~55Hz 98m/s²

Shock : 294m/s²

Life expectancy : Approx. 5,000,000 operations.

Mass : Approx. 350g

●Electrical Performance

Potentiometers mounted : SFCP22E 10k Ω \pm 15%, 0.2W, independent linearity tolerance \pm 3% (conductive plastic resistive element). (Electrical rotating angle : Approx. 60°)

[All terminals can be fitted with the AMP110 series fasten receptacle (2.8 × 0.5mm) or equivalents.]

Output smoothness : Below 0.2% against input voltage.

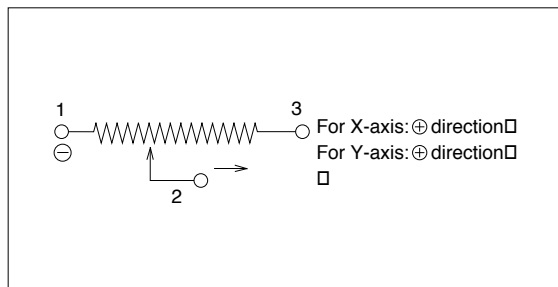
Contact resistance variation : Below 5% C.R.V.

Resolution : Essentially infinite

Dielectric strength : 1 minute at 500V.A.C.

Insulation resistance : Over 1,000M Ω at 500V.D.C.

●Terminal Connection Diagram

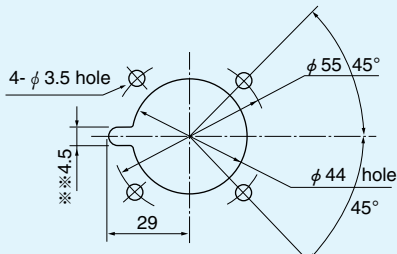


●Special Specification Available

Please see page 45, a table of "Standard and Special Specifications Available".

■Panel Arrangements

(in case of with knob type 102)



- Note : 1) In case of type Q, the angle of mark "※" becomes 360°square-direction and $\pm 20^\circ \sim \pm 25^\circ$ from center position.
- 2) In case of JC with knob type 102, if other components, except our standard pot model SFCP22E, are mounted, the position of mark "※" may be changed to other position.
- 3) 4 pcs. of mounting screws (M3 × 14) are attached.

(Unit : mm)